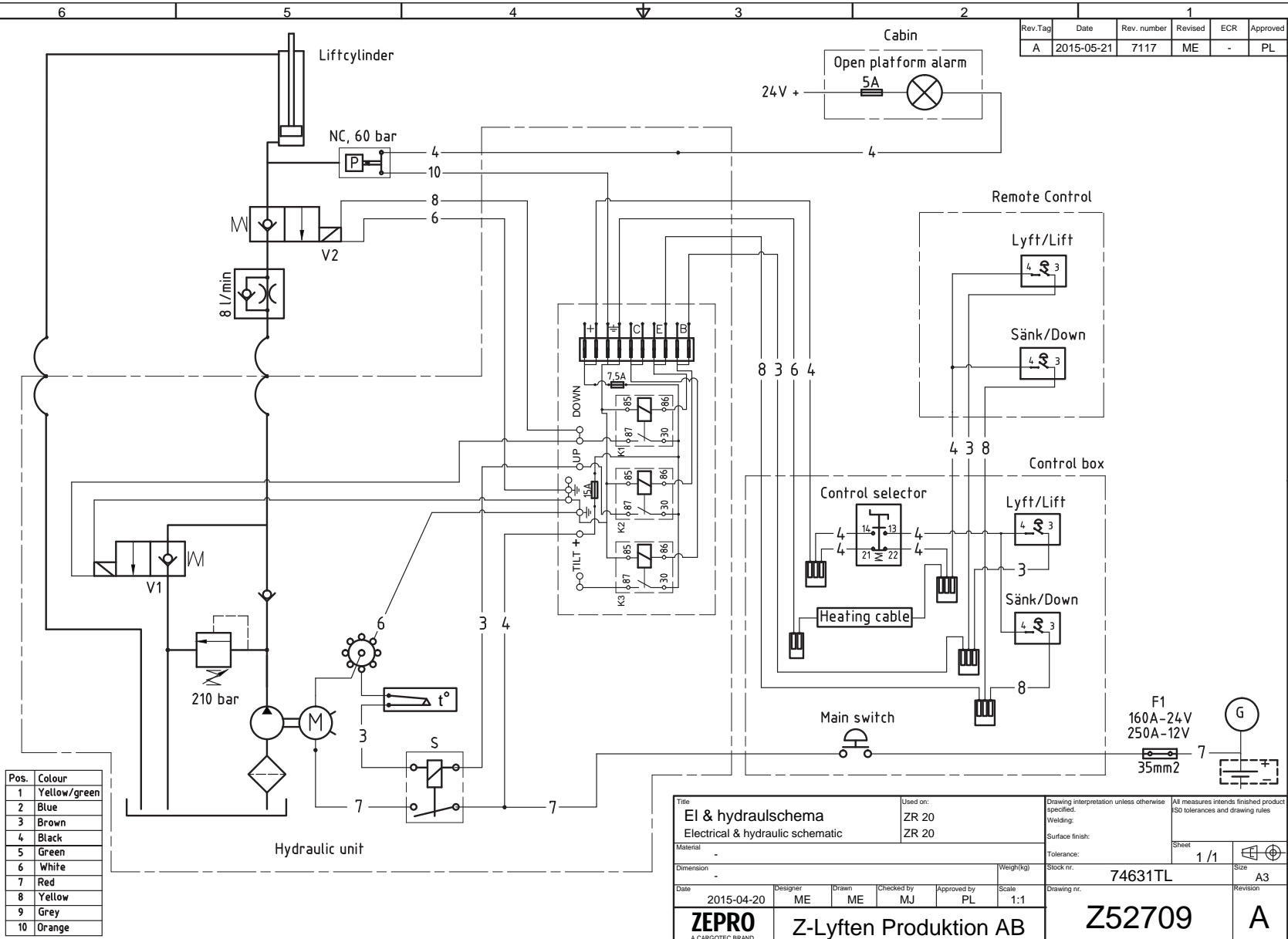


Detta ritning är Z-Lyftens egendom och skyddad enligt internationellt gällande lag för copyright och får ej utan Z-Lyftens skriftliga medgivande kopieras, delges eller obehörigen användas.
 This drawing is property of Z-Lyften Produktion AB and is licensed subject to return upon demand. It is not to be reproduced or used directly or indirectly in any way detrimental to the interest of Z-Lyften Produktion AB.

Pos.	Colour
1	Yellow/green
2	Blue
3	Brown
4	Black
5	Green
6	White
7	Red
8	Yellow
9	Grey
10	Orange



Rev.Tag	Date	Rev. number	Revised	ECR	Approved
A	2015-05-21	7117	ME	-	PL

Title EI & hydraulschema Electrical & hydraulic schematic		Used on: ZR 20 ZR 20	Drawing interpretation unless otherwise specified. Welding: Surface finish: Tolerance:	All measures intends finished product ISO tolerances and drawing rules. Sheet 1/1
Material: -		Weight(kg) -	Stock nr. 74631TL	Size A3
Date 2015-04-20	Designer ME	Drawn ME	Checked by MJ	Approved by PL
Scale 1:1		Drawing nr. Z52709		Revision A
ZEPRO A CARGOTEC BRAND		Z-Lyften Produktion AB		A