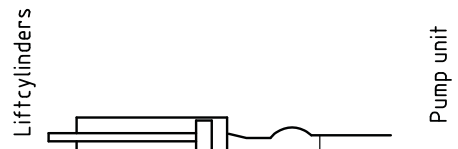
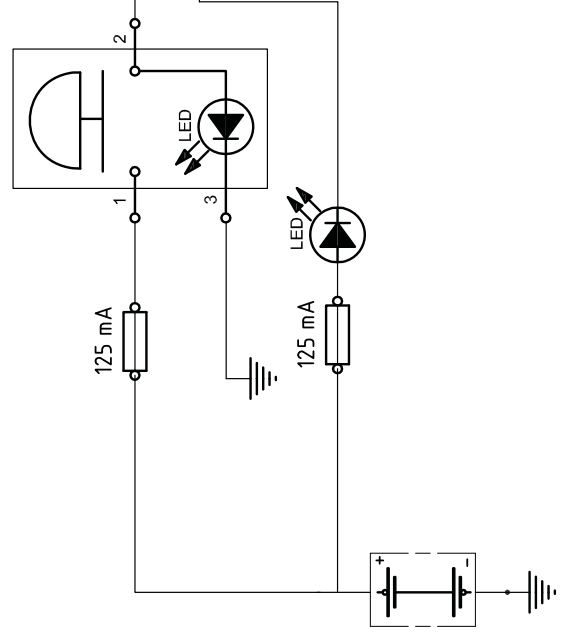
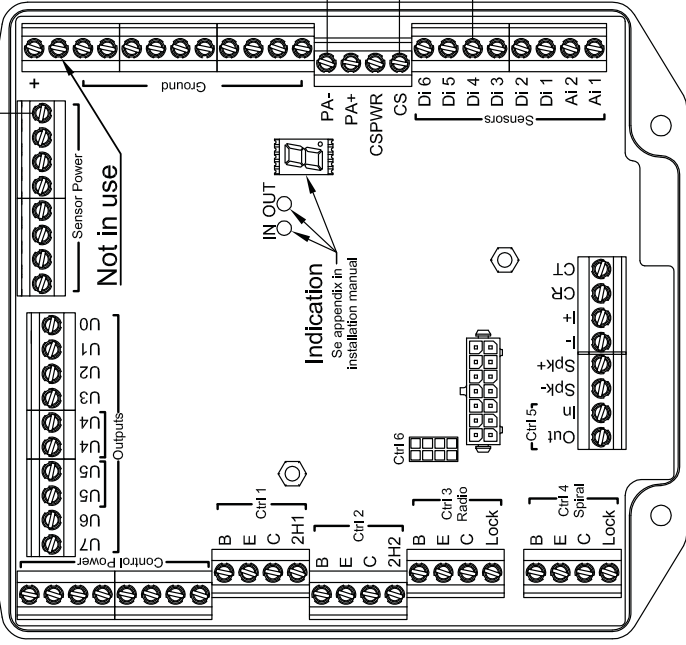


| X | Cablecolour. |
|------|-------------------------|
| X | Number on plastic ring. |
| Pos. | Colour |
| 1 | Yellow/green |
| 2 | Blue |
| 3 | Brown |
| 4 | Black |
| 5 | Green |
| 6 | White |
| 7 | Red |
| 8 | Yellow |
| 9 | Grey |
| 10 | Orange |

If present, connect 4-button card here



| Rev. Tag | Date | Rev. number | Revised | ECR | Approved |
|----------|------------|-------------|---------|-----|----------|
| A | 2014-02-20 | - | TH | - | CL |
| B | 2016-02-29 | 7231 | MB | - | PS |

| | | | | | |
|--|--|--|--|--|--|
| EI & hydraulschema Electrical & hydraulic schematic, Kinnarp | | Used on: Hyttblytare+transp.al kabel. Cab.Switch+Transp.Al kabel | | Drawing interpretation unless otherwise specified. Welding: Surface finish: Tolerance: Stock nr.: 73946TTL | |
| Material: Dimension: Date: 2014-02-20 | | Drawn: TH Checked by: ME Approved by: CL | | Sheet: 1/1 Size: A2 Revision: B | |
| ZEPRO A CARBOTEC BRAND | | Z-Lyften Produktion AB | | Z51983 | |

This drawing is property of Z-Lyften Produktion AB and is loaned subject to return upon demand. It is not to be reproduced or used directly or indirectly in any way detrimental to the interest of Z-Lyften Produktion AB.